

FACTORY SERVICE SCHEDULE

HOLE SAWS

DIAMETER	SHARPEN ONLY	REPLACE CARBIDE & SHARPEN
1/2" thru 1 1/16"	\$ 7.00	\$5.00 each carbide + \$ 7.00 sharpen
3/4" thru 1 3/4"	8.00	5.00 each carbide + 8.00 sharpen
1 7/8" thru 2 3/4"	9.00	5.00 each carbide + 9.00 sharpen
3" thru 4"	12.00	5.00 each carbide + 12.00 sharpen
Porcelain Cutter Kits	16.00	5.00 each carbide + 16.00 sharpen
Porcelain Cutter Kit Components	see corresponding sizes above	
All Carbide-Tipped Pilots	4.00	Sharpen only available

How to order a special hole saw

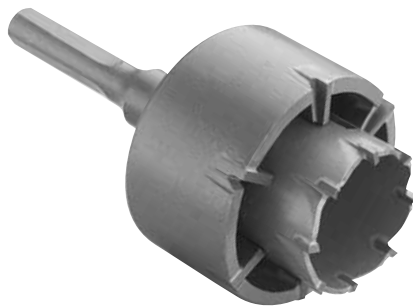
1. Specify material to be cut.
2. Specify diameter.
3. Specify depth of cut.
4. Specify shank diameter (if needed).

Example:

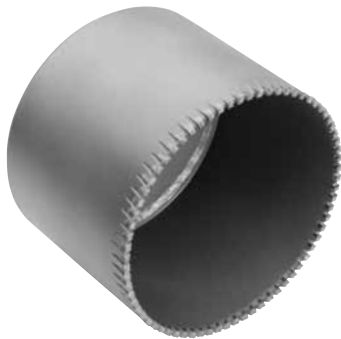
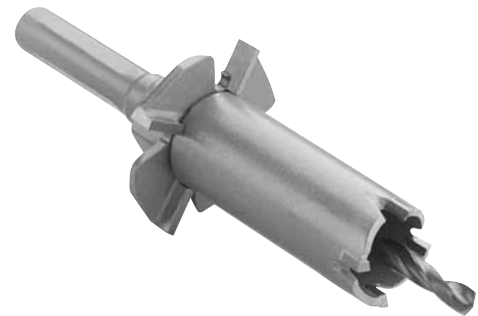
4 1/2" x 10" Wood Cut with 1 1/4-7 threads for diamond drill rig.



TO FIT DIAMOND DRILL RIGS



BACK HOLESAWS



FOR HOT PIPE TAPPING



DEEP-HOLE
METAL-CUTTING



FOR PLASTIC PIPE TAPPING