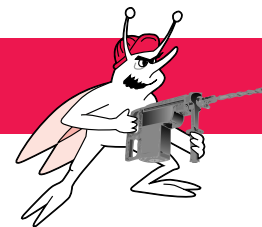


# FORGED HAMMER TOOLS



## SCALING CHISELS

Use for:  
 • removing scale, rust and concrete spatter



Fits These Hammers	Description	Part No.	List Price	Wt. (lbs)
SPLINE	12" OAL X 2"	<b>SC-12S</b>	\$38.00	1.6
	18" OAL X 2"	<b>SC-18S</b>	42.00	2.4
SDS-max	12" OAL X 2"	<b>SC-12MX</b>	41.00	1.6
	12" OAL x 3"	<b>SC-312MX</b>	52.00	2.5
SDS+	18" OAL X 2"	<b>SC-18MX</b>	46.00	2.4
	10" OAL X 1 1/2"	<b>SC-12DS</b>	38.00	.8
3/4" Hex	12" OAL X 2"	<b>SC-12HX</b>	37.00	1.6
	12" OAL X 3"	<b>SC-312HX</b>	40.00	2.5

## COLD CHISELS

Use for:  
 • edging, chipping and channeling concrete, masonry or brick



Fits These Hammers	Description	Part No.	List Price	Wt. (lbs)
SPLINE	12" OAL X 1"	<b>CC-12S</b>	\$21.00	1.4
	18" OAL X 1"	<b>CC-18S</b>	29.00	2.3
SDS-max	12" OAL X 1"	<b>CC-12MX</b>	27.00	1.4
	18" OAL X 1"	<b>CC-18MX</b>	32.00	2.3
SDS+	10" OAL X 3/4"	<b>CC-12DS</b>	28.00	.8
3/4" Hex	12" OAL X 1"	<b>CC-12HX</b>	20.00	1.4
	18" OAL X 1"	<b>CC-18HX</b>	26.00	2.3

## BULL POINTS or MOIL POINTS

Use for:  
 • breaking up concrete, brick, asphalt, etc.  
 • light demolition applications  
 • starting holes in concrete slabs



Fits These Hammers	Description	Part No.	List Price	Wt. (lbs)
SPLINE	12" OAL	<b>BP-12S</b>	\$21.00	1.4
	18" OAL	<b>BP-18S</b>	29.00	2.3
SDS-max	12" OAL	<b>BP-12MX</b>	25.00	1.4
	18" OAL	<b>BP-18MX</b>	30.00	2.3
SDS+	10" OAL	<b>BP-12DS</b>	28.00	.8
3/4" Hex	12" OAL	<b>BP-12HX</b>	20.00	1.4
	18" OAL	<b>BP-18HX</b>	26.00	2.3

## BUSHING TOOLS

Use for:  
 • roughing concrete surface prior to applying a surface finish  
 • concrete surface removal to produce a rough exterior finish



Fits These Hammers	Description	Part No.	List Price	Wt. (lbs)
SPLINE	1 pc Bushing Tool	<b>BT-16S</b>	\$100.00	2.6
SDS-max	1 pc Bushing Tool	<b>BT-16MX</b>	104.00	2.6
3/4" Hex	1 pc Bushing Tool	<b>BT-16HX</b>	100.00	2.6
	16 Pt. Bushing Head	<b>BH-16</b>	42.00	1.1
SPLINE	Bushing Head Shk	<b>BS-8S</b>	23.00	1.0
SDS-max	Bushing Head Shk	<b>BS-8MX</b>	27.00	1.0
3/4" Hex	Bush Shank	<b>BS-8HX</b>	23.00	1.0

## SLOTING CHISELS

Use for:  
 • slotting in concrete and masonry  
 • breaking web between predrilled holes in concrete to make large opening



Fits These Hammers	Description	Part No.	List Price	Wt. (lbs)
SPLINE	12" OAL X 1 1/8"	<b>CR-12S</b>	\$42.00	1.3
SDS-max	12" OAL X 1 1/8"	<b>CR-12MX</b>	47.00	1.3

## CARBIDE BUSHING TOOLS

SPLINE	1 pc Bushing Tool	<b>BT-25CS*</b>	\$300.00	3.0
SDS-max	1 pc Bushing Tool	<b>BT-25CMX*</b>	305.00	3.0
3/4" Hex	1 pc Bushing Tool	<b>BT-25CHX*</b>	300.00	3.0

\* Carbide Bushing Tools have 25 carbide points



## MORTAR CHISELS

Use for:  
 • cleaning out old mortar between bricks and masonry prior to tuck pointing or caulking  
 • cutting narrow channels



Fits These Hammers	Description	Part No.	List Price	Wt. (lbs)
SPLINE	15" OAL X 1 1/8"	<b>MC-15S</b>	\$40.00	1.6
SDS-max	15" OAL X 1 1/8"	<b>MC-15MX</b>	46.00	1.6

## CLAY SPADE

Use for:  
 • Digging clay, dirt, hard-packed gravel, shale, etc.



Fits These Hammers	Description	Part No.	List Price	Wt. (lbs)
3/4" Hex	4 1/2" X 6" X 17"	<b>CS-HX</b>	\$102.00	4.2
SDS-max	4 1/4" X 5 1/4" X 15 1/2"	<b>CS-MX</b>	\$126.00	4.2

## ASPHALT CUTTER

Use for:  
 • cutting asphalt or hard ground – not for concrete



Fits These Hammers	Description	Part No.	List Price	Wt. (lbs)
3/4" Hex	3 1/2" X 4 1/2" X 17"	<b>AC-HX</b>	\$137.00	4.3
SDS-max	4" X 4 1/2" X 15 1/2"	<b>AC-MX</b>	\$152.00	4.3

## GROUND ROD DRIVERS

Use for:  
 • driving electrical grounding rods into earth



Fits These Hammers	Description	Part No.	List Price	Wt. (lbs)
SPLINE	for 5/8" - 3/4" rebar	<b>DR-S</b>	\$104.00	1.1
SDS-max	for 5/8" - 3/4" rebar	<b>DR-MX</b>	108.00	1.1
3/4" Hex	for 5/8" - 3/4" rebar	<b>DR-HX</b>	104.00	1.1